

# CORNER RESTORATION FORM

SECTION 13 TOWNSHIP 6 S RANGE 9 W W.M. BLM ID 700400

DLC \_\_\_\_\_ CORNER SE corner Sec 13

DATE 8/3/2020 POLK COUNTY CORNER FIELD BOOK 202-02 PAGE 51

PREVIOUS RENEWALS / SURVEYS, ETC.  
 (\*References are Polk County Records\*)

GLO Vol 330-238 (J.D. Fenton, 1887); RED-150;  
 CS11800; CS15407; RE11744

\_\_\_\_\_ CONDITION REPORT  
 RENEWED  
 \_\_\_\_\_ UNRECORDED  
 \_\_\_\_\_ SURVEYED IN

**MONUMENT AND ACCESSORIES FOUND (CONDITION AND SOURCE)**

I found a 1½" iron pipe with a 2" Polk County brass cap flush with the ground (RED-150). An orange carsonite post bears 2' N'ly and a bent steel T-post bears 1.5' NW'ly.

- Rotten 46" (60") Doug. fir stump 4½' high bears N35°W (N35°W) 11.3' to center (15lk/9.9' to face). No markings visible. (GLO 1887)
- Rotten 46" (50") Doug. fir stump 6' high bears S20°W (S20°W) 12.9' to center (17lk/11.2' to face). No markings visible. (GLO 1887)
- Rotten 21" (18") Doug. fir stump 18" high bears S45°W (S47°W) 17.2' (17.1'). Face scar visible from top. (RED-150)
- 13" (4") Doug. fir bears S23°W (S24°W) 7.0' (7.2'). Healed face, Lincoln County tag. (RE11744)
- 9" (4") Doug. fir bears N59°W (N52°W) 10.3' (10.5'). Healed face, Lincoln County tag. (RE11744)
- The corner to sections 18 and 19, T6S R8W, bears S0°E (S0°40'10"E) 103.58' (103.58'). (CS11800)

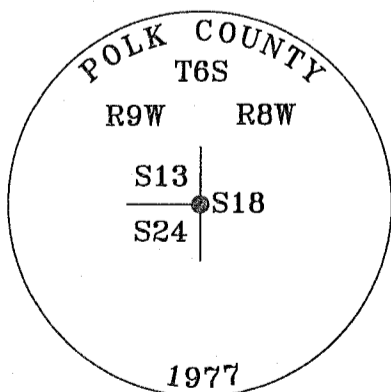
**MONUMENT SET (PROCEDURES AND DESCRIPTION)**

Nothing new.

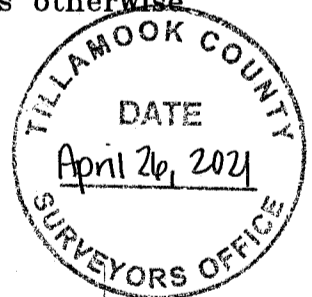
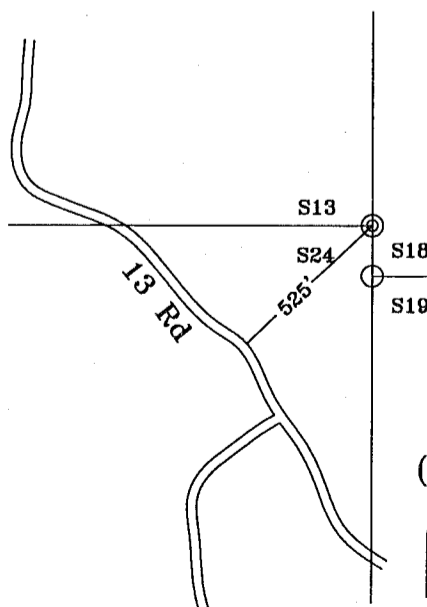
**NOTES**

- 1 -Set witness tags and painted red bands on all bearing trees, unless noted.
- 2 -All distances to new bearing trees are measured to a mag spike and Polk Co. Surveyor brass washer, right side and center unless otherwise noted.

**MONUMENT DETAIL**



**SKETCH**



RESTORATION NO.  
 (Polk County RE12260)

REGISTERED  
 PROFESSIONAL  
 LAND SURVEYOR

*ETB*  
 OREGON  
 JANUARY 15 2002  
 ERIC T BERRY  
 61392

RENEWAL 12/31/2021

**FIRM / AGENCY**

Polk County Surveyors Office  
 820 S.W. Ash St.  
 Dallas, Oregon 97338  
 (503) 623-9287

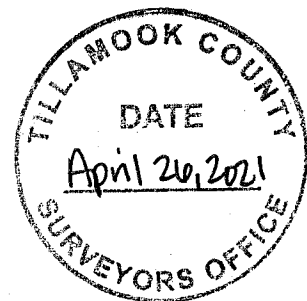
WITNESSES Josh Herzberg

NEW ACCESSORIES

- 15" Doug. fir bears N11°W 15.7'. Scribed "XBT".
- 12" Doug. fir bears N60°E 19.7'. Scribed "BTX".
- New orange carsonite bears E'ly 2.3'.

COORDINATES

See CS15407 for coordinates.

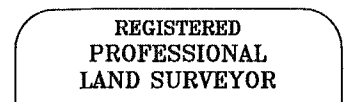


RESTORATION NO.  
(Polk County RE12260)

FIRM / AGENCY

Polk County Surveyors Office  
820 S.W. Ash St.  
Dallas, Oregon 97338  
(503) 623-9287

WITNESSES Josh Herzberg



*ER*

